



VANLEIGH RV



2018 VILANO VALUE GUIDE

Vanleigh RV, Inc.
26 Industrial Dr. Access Rd.
Burnsville, MS 38833

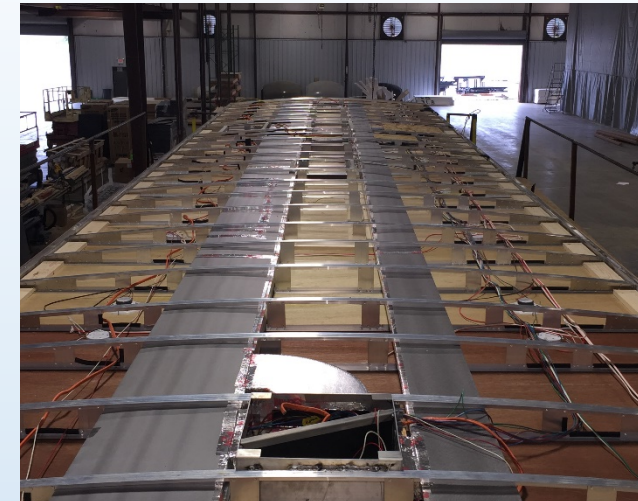
SHOW ME THE MONEY

At Vanleigh RV we are proud to offer the most value driven fifth-wheel in the industry. Knowing how competitive the fifth-wheel market is today we feel it is important that our customers see the loads of value in their investment. The Vilano offers many features which are typically reserved for units at higher price-points. This presentation will directly highlight the great VALUE that is found in the Vilano by Vanleigh RV.



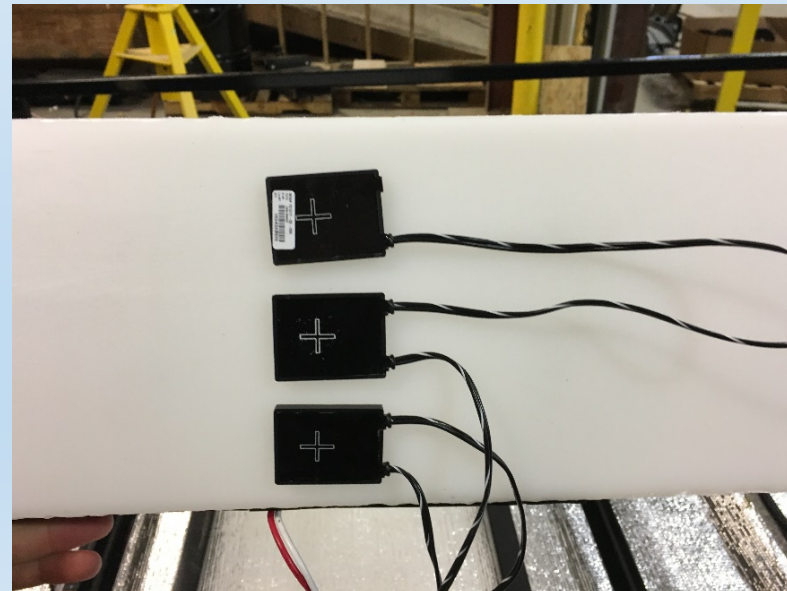
CONSTRUCTION VALUE

- 16" ON CENTER ALUMINUM ROOF VS. WOOD
- 16" ON CENTER ALUMINUM FLOOR VS. WOOD
- BATTEN FIBERGLASS INSULATION IN ROOF & FLOOR VS. BLOCK FOAM
- DUAL COPPER WATER MANIFOLD SYSTEM VS. NO MANIFOLD
- T60 EXTERIOR FIBERGLASS (PLUSH EXTERIOR LOOK, NO ORANGE PEEL, 4X THICKNESS) VS. LAMILUX GLASS
- SLIDE FLOORS- FRAME, LAMINATED AND INSULATED VS. OSB BOARD
- TPO ROOF VS. RUBBER ROOF
- POWDERCOATED ALUMINUM WET BAY VS. PLASTIC OR ROTOCAST



EXTERIOR VALUE

- **DUAL LOW PROFILE 15K BTU A/C'S (3rd OPTION)** VS. HIGH PROFILE OR 13.5K BTU
- **DIGITAL NON-CRANK ANTENNA** VS. MANUAL CRANK
- **TOUCH SENSOR TANK MONITORS** VS. PROBES THAT MOUNT INSIDE OF TANK (CORRODE, INACCURATE READINGS)
- **PRO-STAR EXTERIOR LED LIGHTS** VS. HALOGEN EXTERIORS
- **12V ELECTRIC GATES FOR HOLDING TANKS** VS. PULL CABLES
- **SOLID 4 STEP ALUMINUM ENTRY** VS. 3 STEP/ STEEL STEPS
- **SLAM LATCH DOORS THROUGHOUT** VS. THUMB LATCH/LESS INSULATED DOORS
- **12V TANK HEATERS STANDARD** VS. NO TANK HEATERS OR OPTIONAL TANK HEATERS



INTERIOR VALUE

- **HARDWOOD MANUFACTURED IN-HOUSE** VS. WRAPPED WOOD/ WOOD PURCHASED FROM VENDOR
- **HARDWOOD FASCIA AND VALANCES** VS. WRAPPED FASCIA/ METAL ROD AND DRAPED LINEN VALANCES
- **SOLID SURFACE DINETTE TABLE** VS. LAMINATE DINETTE TABLE
- **8 FT TALL SLIDE-OUT BOXES** VS. 6'6" SLIDE-OUT BOXES
- **SPYDER MULTIPLEX WIRING SYSTEM W/ LABELED LIGHT SWITCHES (LED BACKLIT), DIMMING FUNCTION** VS. ROCKER SWITCHES W/OUT LABELS/ NON BACKLIT/ NO DIMMING
- **DIGITAL DISPLAY FOR TANK LEVELS** VS. INACCURATE BUTTON WITH 3 RED LIGHTS
- **WHISPER QUIET A/C** VS. A/C NOISY DUMP SYSTEM
- **SOFT TOUCH VINYL CEILINGS (SOUND DAMPENING)** VS. HARD PANELED CEILINGS
- **HAND LAID GLASS TILE BACK SPLASHES** VS. NO BACKSPLASH OR FAKE/PLASTIC BACKSPLASH
- **MOTION SENSORED LIGHTING IN PANTRY, CLOSET, WET BAY, AND PASS THRU COMPARTMENT** VS. ROCKER LIGHTS
- **NO CARPET IN BEDROOM/ LIMITED CARPET THROUGHOUT** VS. CARPET



INTERIOR VALUE (CONT)

- **SLOW RISE ROLLER NIGHT SHADE** vs. PLEATED SHADES
- **1,000 WATT PURE SINE INVERTER** vs. MODIFIED SINE OR NO INVERTER
- **COOL GEL MEMORY FOAM RESIDENTIAL MATTRESS** vs. RV MATTRESS
- **HARDWOOD WAINSCOTING ACCENT WALL IN BEDROOM** vs. WALLBOARD
- **RESIDENTIAL SOLID SURFACE COUNTER TOPS IN GALLEY AND BATHROOM** vs. LAMINATE COUNTERS IN GALLEY OR BATHROOM
- **MOTORHOME DNA/PEDIGREE**
WE UTILIZE OVER 40 YEARS OF MOTORHOME EXPERIENCE IN TIFFIN MOTORHOMES WHEN DESIGNING OUR FIFTH-WHEELS.



CONTACTS

LEIGH TIFFIN

GENERAL MANAGER

662-594-2290

LEIGH.TIFFIN@VANLEIGHRV.COM

STEVE TROYER

REGIONAL SALES MANAGER (NORTHEAST)

574-361-2377

STEVE.TROYER@VANLEIGHRV.COM

RICK LEWIS

REGIONAL SALES MANAGER (MIDWEST)

662-665-5349

RICK.LEWIS@VANLEIGHRV.COM

JOSH CIERNIA

REGIONAL SALES MANAGER (WEST COAST)

541-731-0393

JOSH.CIERNIA@VANLEIGHRV.COM

FREDDIE SWINNEY

NATIONAL SALES MANAGER

256-394-2226

F.SWINNEY@VANLEIGHRV.COM

ADAM HESTER

SERVICE MANAGER

662-331-2923

ADAM.HESTER@VANLEIGHRV.COM

DAVID JONES

REGIONAL SALES MANAGER (SOUTHEAST)

256-490-7375

DAVID.JONES@VANLEIGHRV.COM

TECHNICAL SUPPORT

BRYAN POWERS OR SHAWN COLE

662-660-2446

CUSTOMERCARE@VANLEIGHRV.COM